

Standalone Scheduler Property File Creation  
Oracle Banking Payments  
Release 12.5.0.0.0  
[Sep] [2017]



---

# Table of Contents

- 1. CREATING PROPERTY FILE FOR STANDALONE SCHEDULER..... 1-1
  - 1.1 INTRODUCTION..... 1-1
  - 1.2 CREATING PROPERTY FILE..... 1-1
    - 1.2.1 *Setting Common Properties*..... 1-5
    - 1.2.2 *Configuring Scheduler*..... 1-7
    - 1.2.3 *Setting EMS Properties*..... 1-18
    - 1.2.4 *Saving Property File*..... 1-22

# 1. Creating Property File for Standalone scheduler

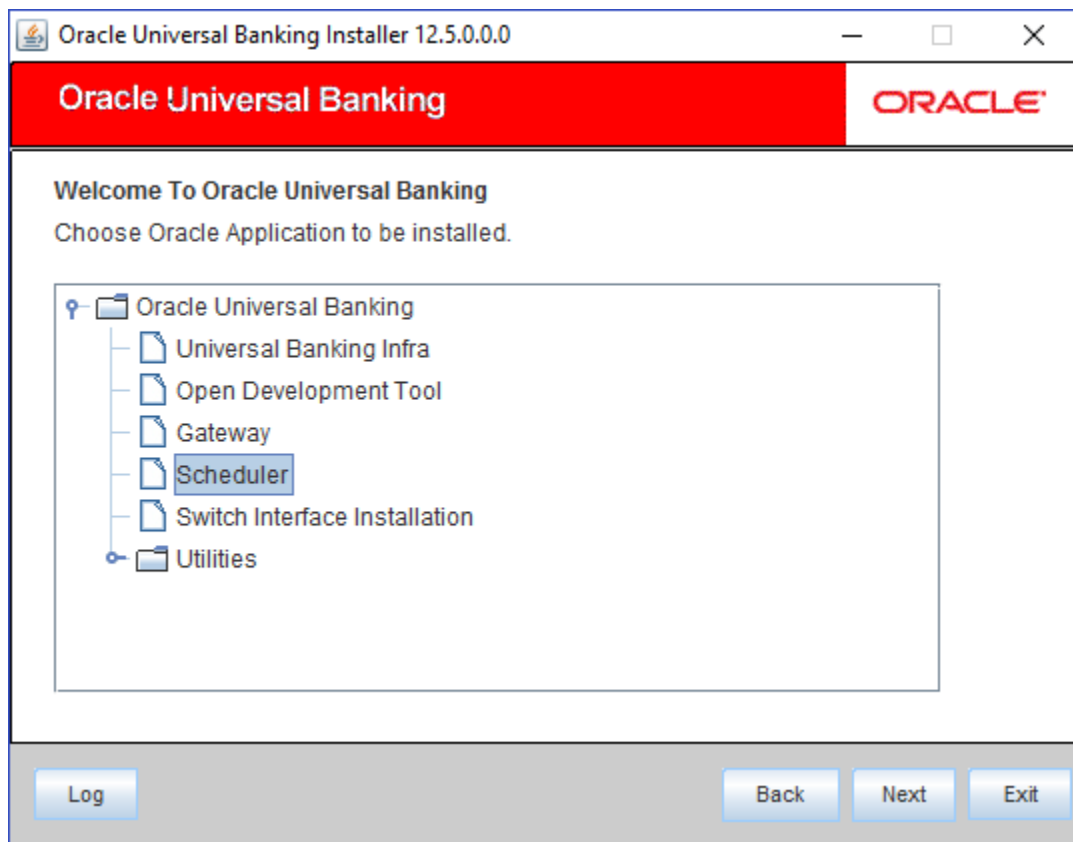
## 1.1 Introduction

This chapter explains the steps to create property file for Standalone Scheduler.

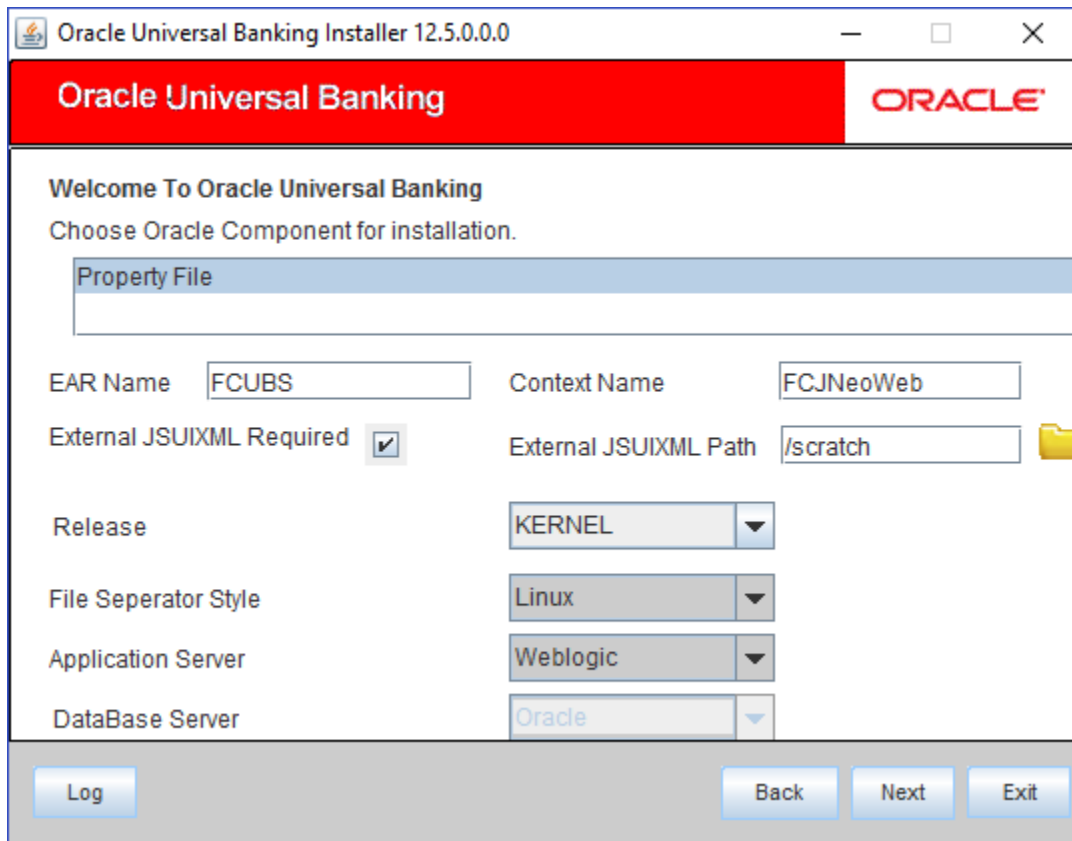
## 1.2 Creating Property File

To create the property file for Oracle Banking Payments, follow the steps given below:

1. Launch Oracle Banking Universal Installer.
2. Click 'Next' and the following screen is displayed.



3. Select 'Scheduler'.
4. Click 'Next' and the following screen is displayed:



5. Select 'Property File'.
6. Specify the following details:

### **Operating System**

Specify the operating system in which you are creating the property file. Select the appropriate one from the adjoining drop-down list.

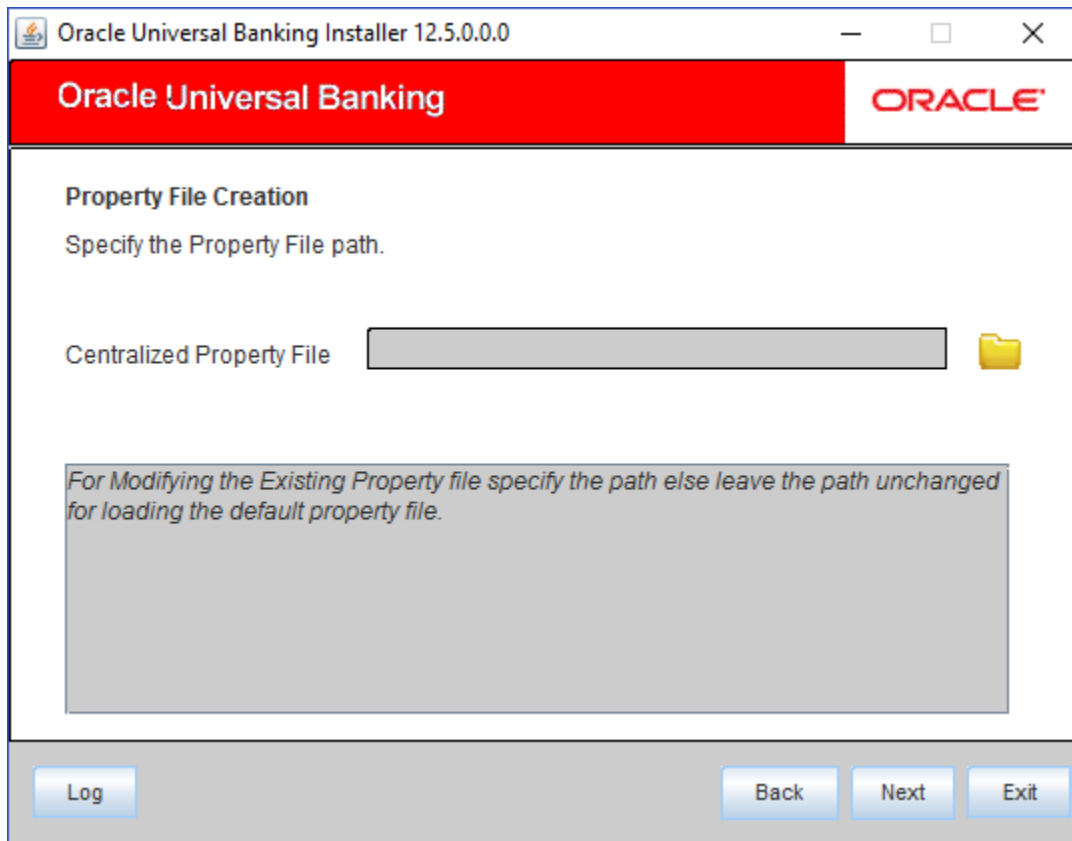
### **Application Server**

Specify the application server in which you are creating the property file. Select the appropriate one from the adjoining drop-down list.

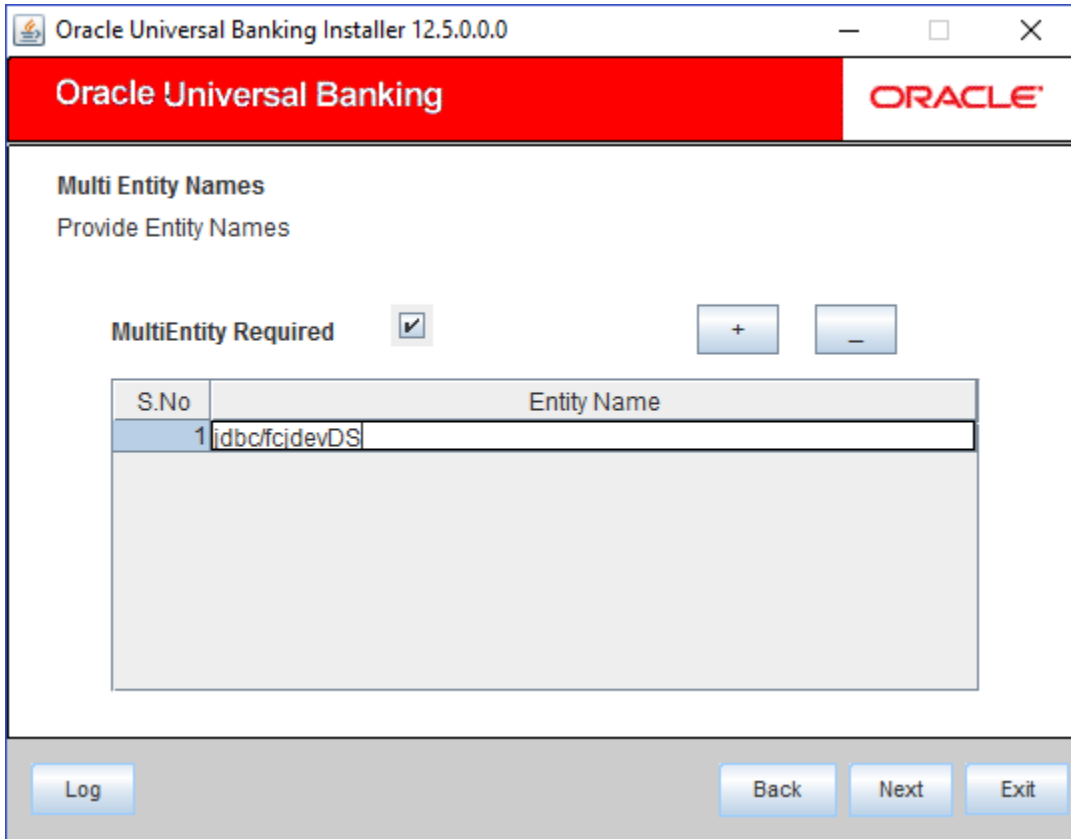
### **Release**

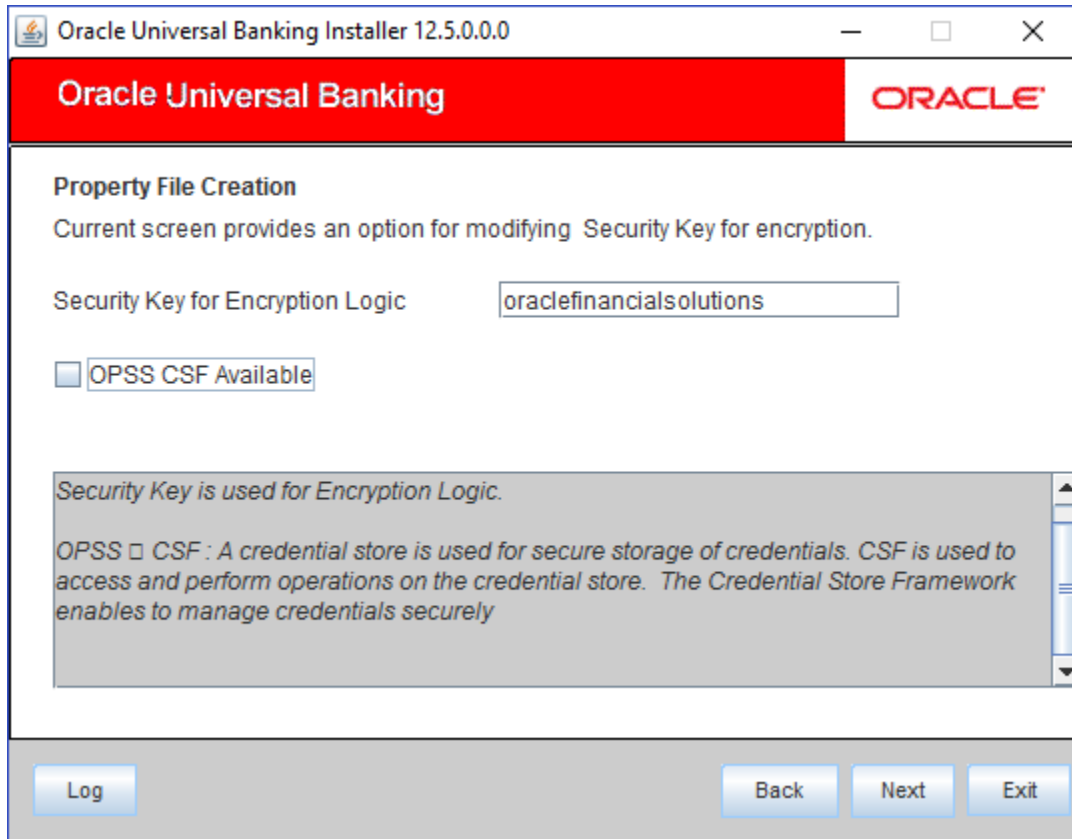
Select the release from the adjoining drop down list.

7. Once you have specified the details, click 'Next' to continue and following screen is displayed:



8. Specify the following details:





### 1.2.1 **Setting Common Properties**

This section describes the process of setting common properties of Standalone Installer.

1. The installer displays the 'Common Properties' screen.

**Property File Creation**  
Current screen provides an option for modifying the Common property values.

Debug Logs Required

Work Area

Signature Path

Excel Path

Data Source

Request Time Out  In milli seconds

Connection Time Out  In Seconds

Session Time Out  In Seconds

LOV Fetch Required

Max Image Size  In Bytes

User Batch Time  In Hours

2. Specify the following details:

**Debug Logs Required**

If you require debug option, select 'Yes' from the drop-down list. If you do not require debug option, select 'No'.

**Work Area**

Specify the work area.

For example: D:\BrnDbgs\

**Signature Path**

Specify the location at which the signature images are placed.

**Excel Path**

Specify the location at which the excel files are generated.

**Data Source**

Specify the JNDI location. The standard format is 'jdbc/fcjdevDS'.



### **Request Time Out**

Specify the database request timeout value in milli seconds. This is the maximum number of seconds the database waits for a query to return the result.

### **Connection Time Out**

Specify the database connection timeout value in seconds. This is the maximum number of seconds the application waits for a connection to the database to open.

### **Session Time Out**

Enter the session time out value in seconds. This is the maximum number of seconds during which the application gets active without any user intervention. If there is no user intervention continuously for the duration specified here, the user session gets expire.

### **LOV Fetch Required**

If you check this box, the option lists in Oracle Banking Payments displays the matching values based on the first characters that you enter in a field. If you specify the first three characters of a value to be entered in an option list and tab out, the system displays the complete list of values that are matching the first three characters.

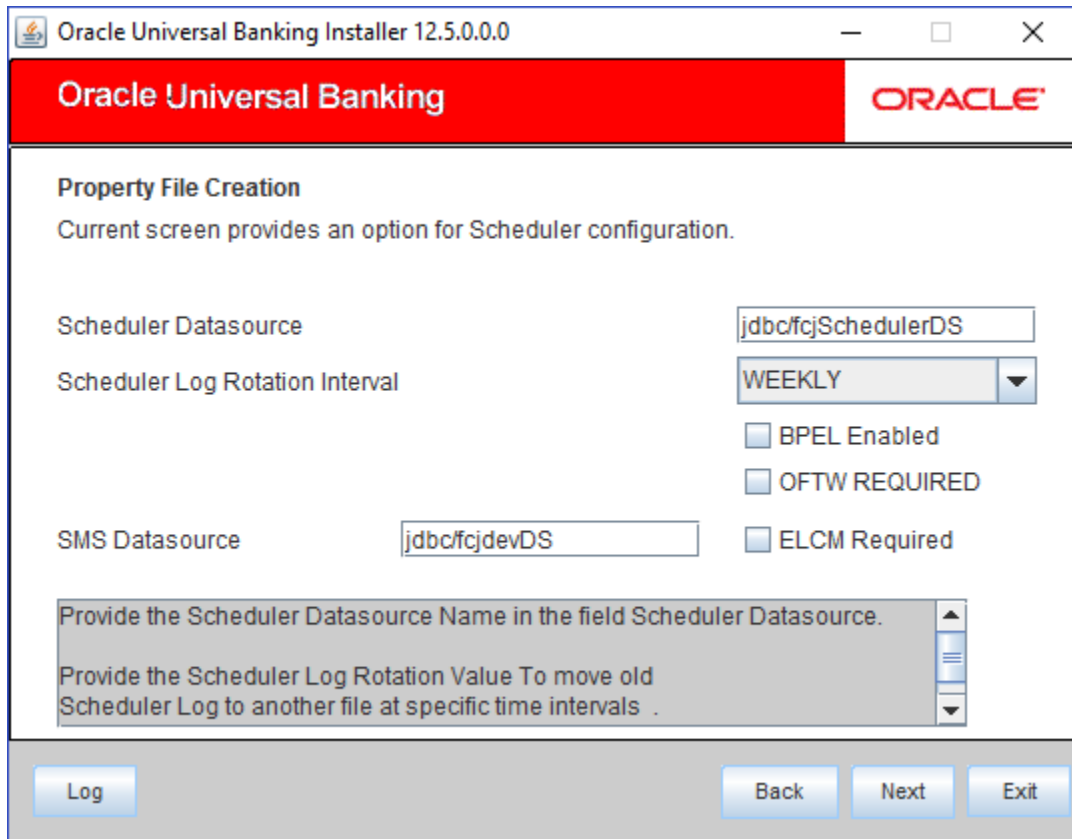
If you do not check this, option lists does not show the matching values based on the first few characters. You need to specify the complete value against the field.

Click 'Next' and the following screen is displayed:

## **1.2.2 Configuring Scheduler**

This section describes the method to configure scheduler data source.

1. System displays the following screen:



2. Specify the following details:

**Scheduler Datasource**

Specify the scheduler datasource which Oracle Banking Payments will access.

**Symmetric Key**

Specify the symmetric key for encryption.

**Scheduler Log Rotation Interval**

Specify the scheduler log rotation interval..

**BPEL Enable**

Specify the scheduler has BPEL enabled or not.

**ELCM Required**

Specify the scheduler , ELCM is required or not.

### Scheduler Log Rotation Interval

Select the interval between each rotation of scheduler log.

3. Click 'Next' and the following screen is displayed:

Oracle Universal Banking Installer 12.5.0.0.0

**Oracle Universal Banking** ORACLE

**Property File Creation**

Current screen provides an option for configuring Scheduler Destination Queue.

Notify Destination: QUEUE

Queue Name: NOTIFY\_DEST\_QUEUE

Queue Connection Factory: NotifyDestQCF  Secure

Notify Queue Location: Internal

Log Back Next Exit

4. Specify the following details:

#### Notify Destination

Specify the notify destination. Select one of the following options:

- QUEUE
- TOPIC

#### Queue Name

Set 'NOTIFY\_DEST\_QUEUE' as the destination queue name.

#### Queue Connection Factory

Set 'NotifyDestTCF' as the queue connection factory.

## Secure

Check this box to indicate that it is a secured queue connection factory. If you check this box, you will be prompted to specify the caller ID and caller password as shown in the following screen.

Oracle Universal Banking Installer 12.5.0.0.0.0

Oracle Universal Banking ORACLE

**Property File Creation**

Current screen provides an option for configuring Scheduler Destination Queue.

Notify Destination QUEUE

Queue Name NOTIFY\_DEST\_QUEUE

Queue Connection Factory NotifyDestQCF  Secure

Notify Queue Location Internal


Log Back Next Exit

## Caller ID

Specify the caller ID for the secured queue connection factory.

## Caller Password

Specify the password for the caller ID to access the secured queue connection factory.

 If the queue connection factory is not secured, i.e., if you have not checked the box 'Secure', the installer will not display the fields 'Caller ID' and 'Caller Password'. You need not provide these details in that case.

## Notify Queue Location

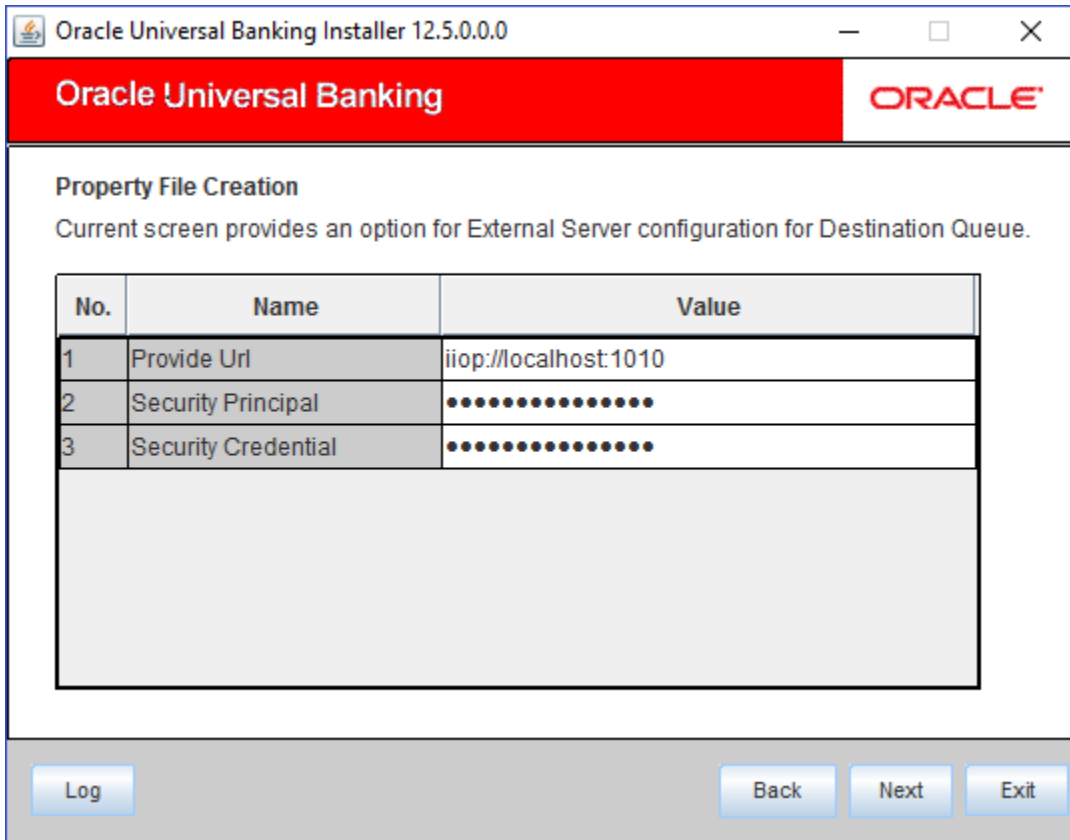
Specify the notify queue location. Select one of the following options:

- Internal
- External



For Oracle WebLogic application server, the notify queue location should be selected as 'Internal'. If you choose 'Internal' as the 'Notify Queue Location', the screen provided in the following step does not get displayed. You will be navigated to next step where you can specify the notify deferred queue name and connection factory.

5. If you choose 'External', system displays the following screen:



6. Specify the following details of the external queue.

**Provider URL**

Specify the provide URL (iiop://localhost:1010).

1010 is the default IOP port.

**Security Principal**

Specify the login ID to access the application server.

**Security Credentials**

Specify the password to access the application server.

7. Click 'Next' to proceed with scheduler configuration.



If you choose 'Internal' as the 'Notify Queue Location', you will be directly navigated to the following screen. In that case, the installer will not show the screen explained in the previous step.

Oracle Universal Banking Installer 12.5.0.0.0

**Oracle Universal Banking** ORACLE

**Property File Creation**

Current screen provides an option for Scheduler configuration.

Notify Deferred Queue Name

Deferred Queue Connection Factory   Secure

Log Back Next Exit

8. Specify the following details:

**Notify Deffered Queue Name**

Set 'DEFERRED\_DEST\_QUEUE' as the notify differed queue name.

**Deffered Queue Connection Factory**

Set 'DefferedDestQcf' as the deffered queue connection factory.

**Secure**

Check this box to indicate that it is a secured deffered queue connection factory. If you check this box, you will be prompted to enter the caller ID and caller password as shown in the following screen.

Oracle Universal Banking Installer 12.5.0.0.0

**Oracle Universal Banking** ORACLE

**Property File Creation**

Current screen provides an option for Scheduler configuration.

Notify Deferred Queue Name

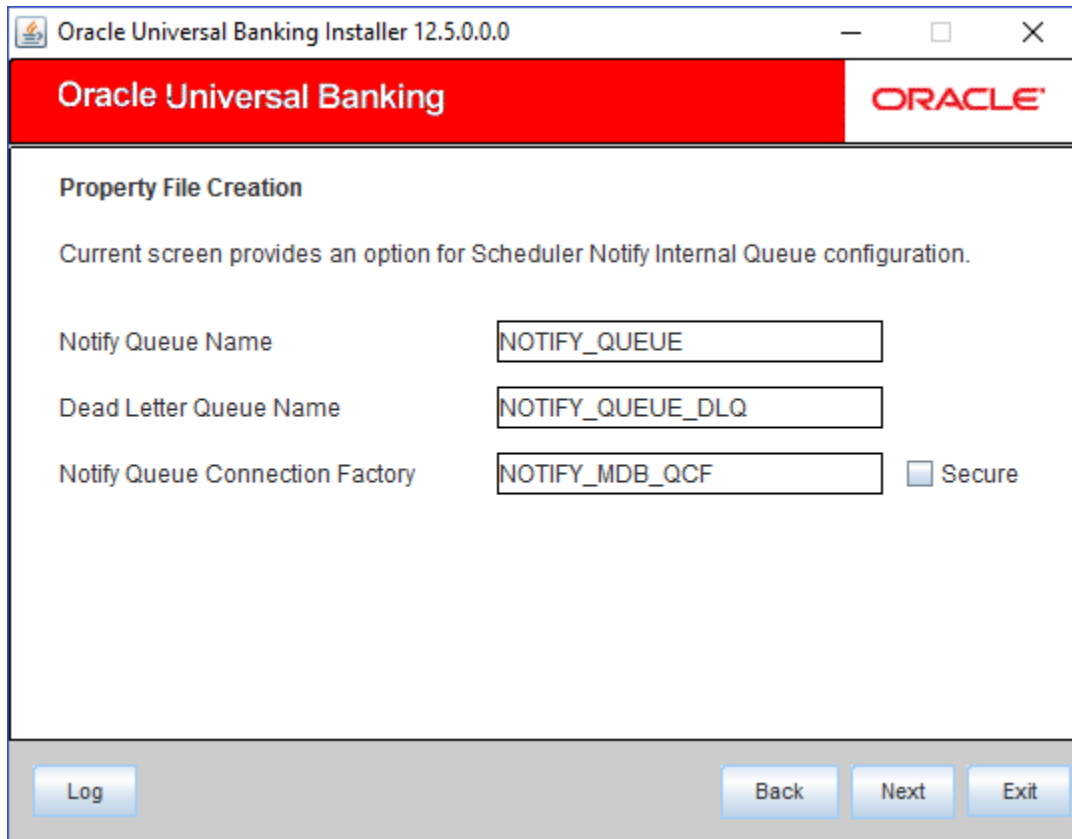
Deferred Queue Connection Factory   Secure

Caller ID

Caller Password

Log Back Next Exit

9. Specify the caller ID and caller password for the secured deferred queue connection factory.
10. Click 'Next' and the following screen is displayed:



11. Specify the following details:

**Notify Queue Name**

Set 'NOTIFY\_QUEUE' as the notify queue name.

**Dead Letter Queue Name**

Set 'NOTIFY\_QUEUE DLQ' as the dead letter queue name.

**Notify Queue Connection Factory**

Set 'NOTIFY\_MDB\_QCF' as the notify queue connection factory.

**Secure**

Check this box to indicate that it is a secured queue connection factory. If you check this box, you will be prompted to enter the caller ID and caller password as shown in the following screen.



Oracle Universal Banking Installer 12.5.0.0.0

**Oracle Universal Banking** ORACLE

**Property File Creation**

Current screen provides an option for Scheduler Notify Internal Queue configuration.

Notify Queue Name

Dead Letter Queue Name

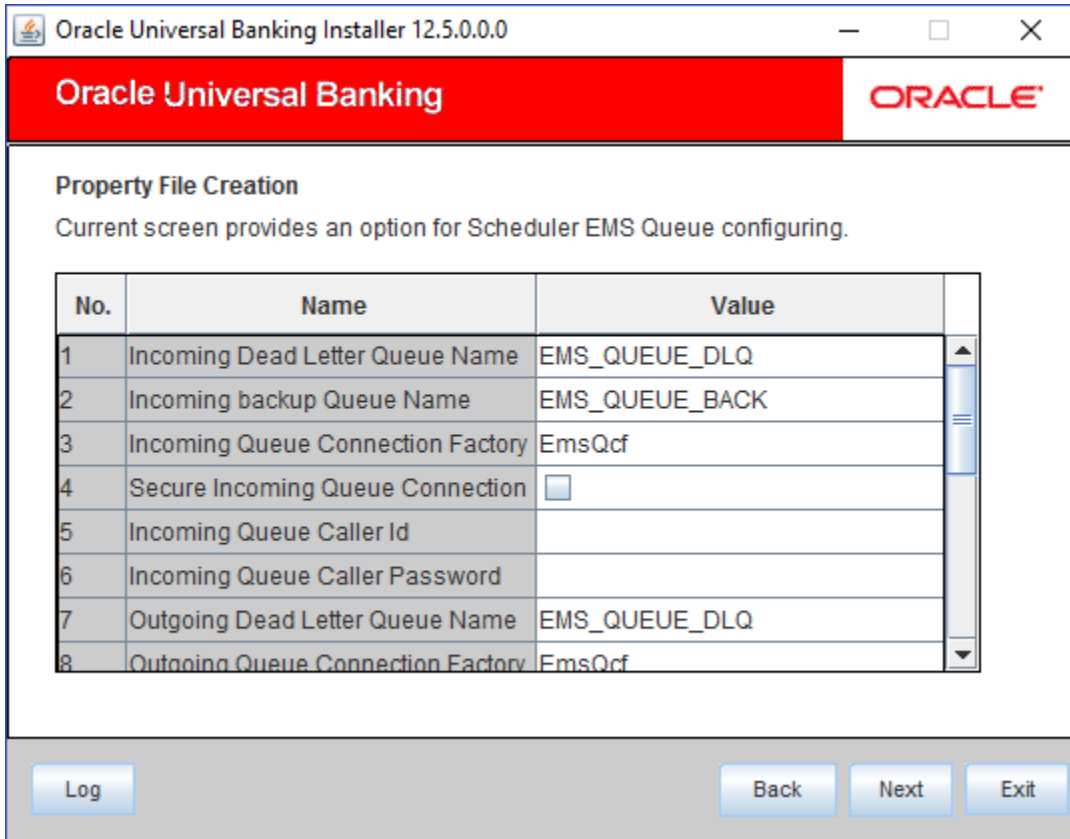
Notify Queue Connection Factory   Secure

Caller ID

Caller Password

Log Back Next Exit

12. Specify the caller ID and caller password for the secured notify queue connection factory.
13. Click 'Next' and the following screen is displayed:



Specify the following details:

**Incoming Dead Letter Queue Name**

Set 'EMS\_QUEUE\_DLQ' as the incoming dead letter queue name.

**Incoming Backup Queue Name**

Set 'EMS\_QUEUE\_BACK' as the incoming backup queue name.

**Incoming Queue Connection Factory**

Set 'EmsQcf' as the incoming queue connection factory.

**Secure Incoming Queue Connection**

Check this box to indicate that it is a secured queue connection.

**Incoming Queue Caller ID**

Specify the caller ID for the secured queue connection.

**Incoming Queue Caller Password**

Specify the caller password for the secured queue connection.

**Outgoing Dead Letter Queue Name**

Set 'EMS\_QUEUE\_DLQ' as outgoing dead letter queue name.

**Outgoing Queue Connection Factory**

Set 'EmsQcf' as the outgoing queue connection factory.

**Secure Outgoing Queue Connection**

Check this box to indicate that it is a secured outgoing queue connection.

**Outgoing Queue Caller ID**

Specify the caller ID for the secured queue connection.

**Outgoing Queue Caller Password**

Specify the caller Password for the secured queue connection.

**Outgoing Queue Provider URL**

Specify the URL of the outgoing queue.

**Queue Principal**

Specify the queue principal.

**Queue Credential**

Specify the queue credential.

**Incoming Queue Name**

Specify the incoming queue name.

**Outgoing Queue Name**

Specify the outgoing queue name.

**SFMS Incoming Queue**

Specify the SFMS Incoming Queue.

**RTGS Incoming Queue**

Specify the RTGS incoming Queue.

Once you have specified the above details, click 'Next' and system displays the next screen.

### 1.2.3 Setting EMS Properties

You will be navigated to the 'Scheduler EMS Properties' screen. Here, you need to set the EMS details.

1. Set the EMS properties:

No.	Name	Value
1	Incoming Dead Letter Queue Name	EMS_QUEUE_DLQ
2	Incoming backup Queue Name	EMS_QUEUE_BACK
3	Incoming Queue Connection Factory	EmsQcf
4	Secure Incoming Queue Connection	<input type="checkbox"/>
5	Incoming Queue Caller Id	
6	Incoming Queue Caller Password	
7	Outgoing Dead Letter Queue Name	EMS_QUEUE_DLQ
8	Outgoing Queue Connection Factory	EmsQcf

2. Specify the following details:

#### **OutGoing Connection Factory**

Specify the name of the outgoing connection factory to which EMS listens. You need to create this connection factory at the application server.

For details on connection factory creation, follow the steps described for creation of notify connection factories.

#### **Incoming Connection Factory**

Specify the name of the incoming connection factory to which EMS listens. You need to create this connection factory at the application server.

For details on connection factory creation, follow the steps described for creation of notify connection factories.

### **Outgoing Queue Name**

Specify the name of the outgoing queue for which EMS is configured. By default, this is set as 'NOTIFY\_QUEUE\_DLQ'.

### **Incoming Queue Name**

Specify the name of the incoming queue for which EMS is configured. By default, this is set as 'NOTIFY\_QUEUE\_DLQ'.

### **Incoming Backup Queue Name**

Specify the name of the incoming backup queue for which EMS is configured.

### **Outgoing Queue Provider URL**

In case EMS OUT MDB is to be configured to queue, you need to specify the URL for outgoing provider based on the application server. By default, the Installer displays the outgoing queue provider URL for Oracle WebLogic.

This value is application server dependent.

The details of Outgoing Queue Provider URL to be used for different application servers are given below:

<b>Application Server</b>	<b>EMS Out Initial Context Factory</b>
Oracle WebLogic	t3://<ip_adress>:port E.g.: t3://10.10.10.10:1010 Here, 10.10.10.10 represents the local host and 1010 to the target server default port (AdminServer/ManagedServer).
IBM WebSphere	iiop://<ip_adress>:port E.g.: iiop://10.10.10.10:1010 Here, 1010 represents the default iiop port

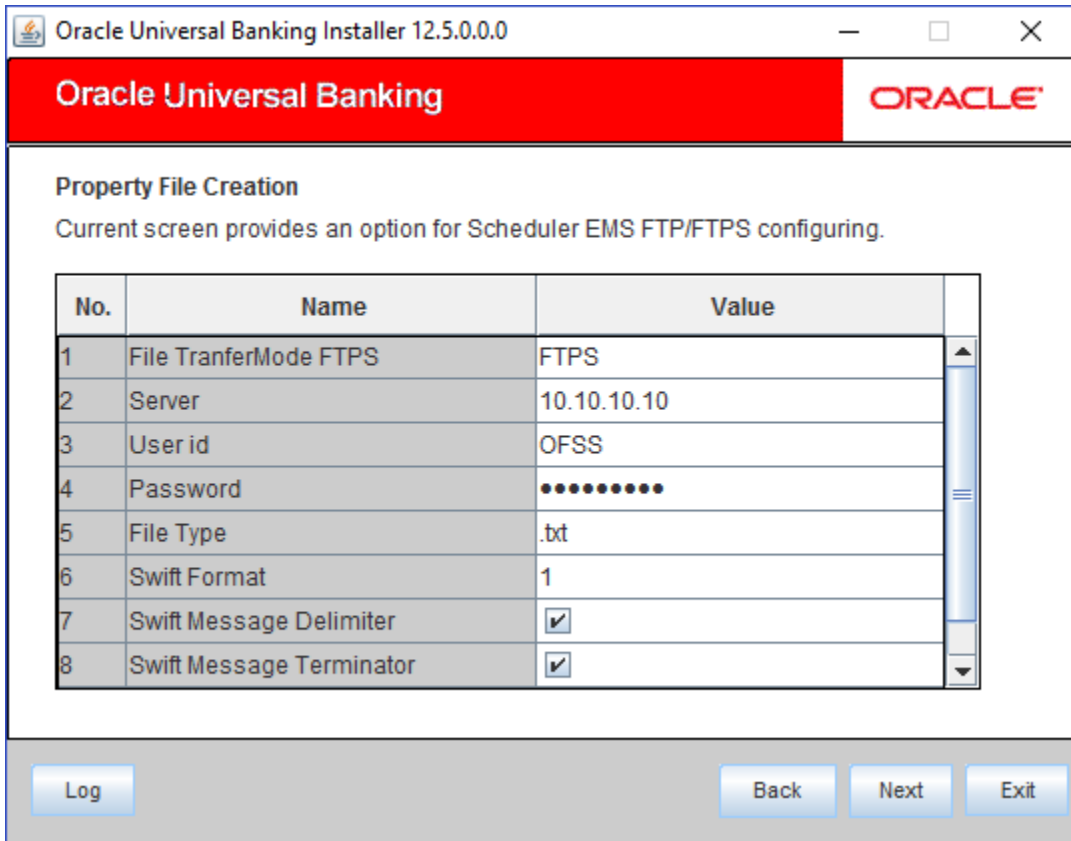
### **Queue Principal**

If EMS OUT MDB has to be configured to queue, you need to specify the EMS out queue principal. This is the user name for the application server in which the queue is configured.

### **Queue Credential**

If EMS OUT MDB has to be configured to queue, you need to specify the EMS out queue credential. This is the password for the above user name created for application server in which the queue configured.

3. Once you have specified the above details, click 'Next' and the following screen is displayed:



4. Specify the following details:

#### **File Transfer Mode FTPS**

Specify the mode of transferring files to EMS. Select one of the following:

- FTPS
- SFTP
- HTTP

#### **Server**

Specify the server IP address for the selected file transfer mode.

#### **User ID**

Specify the user ID to access the server of the file transfer mode.

#### **Password**

Specify the password to for the above user ID.

## File Type

Specify the type of file that is transferred. By default, the Installer sets it as '.txt'.

## SWIFT Message Delimiter

Specify the character which is used as the message delimiter.

## SWIFT Message Terminator

Specify the character which is used as the message terminator.

5. Once you have specified the above details, click 'Next'. and the following screen is displayed:

No.	Name	Value
1	Signature Block	<input checked="" type="checkbox"/>
2	Keystore File Name	/keystore
3	Keystore Alias name	.....
4	keystore Password	.....

6. Specify the following details:

## Signature Block

Check this box to enable signature block.

## Keystore File Name

Specify the keystore file name.

### Keystore Alias Name

Specify the keystore alias name.

### Keystore Password

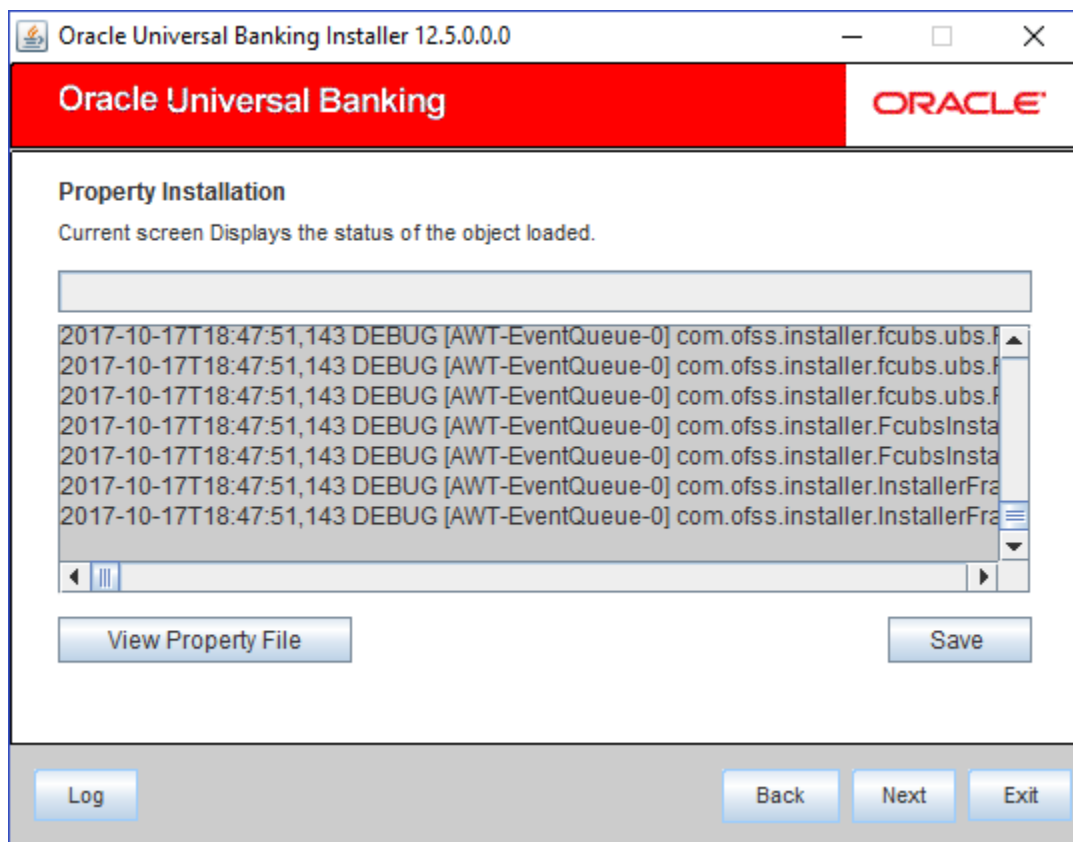
Specify the keystore password.

7. Once you have specified the above details, click 'Next' and system displays the next screen.

## 1.2.4 Saving Property File

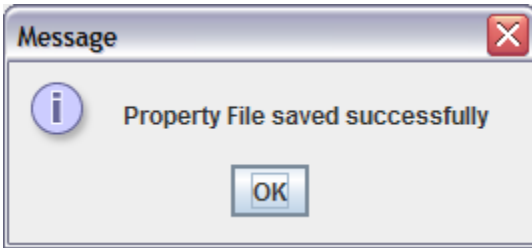
After completing all the required settings explained above, you need to save the property file.

1. Save the property file.

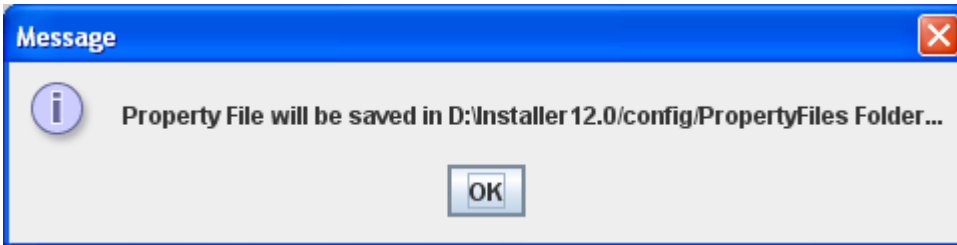


2. You can view the status of property file creation in the above screen. Once the file is saved, the installer displays the following message:





3. If you do not use the 'Save' or Save As' buttons, the installer will save the properties file in '<InstallerSources>\config\PropertyFiles' folder. In that case, you will see the message below.



This completes the properties file creation.



Standalone Scheduler Property File Creation  
[Sep] [2017]  
Version 12.5.0.0.0

Oracle Financial Services Software Limited  
Oracle Park  
Off Western Express Highway  
Goregaon (East)  
Mumbai, Maharashtra 400 063  
India

Worldwide Inquiries:  
Phone: +91 22 6718 3000  
Fax: +91 22 6718 3001  
[www.oracle.com/financialservices/](http://www.oracle.com/financialservices/)

Copyright © [2017], Oracle and/or its affiliates. All rights reserved.

Oracle and Java are registered trademarks of Oracle and/or its affiliates. Other names may be trademarks of their respective owners.

**U.S. GOVERNMENT END USERS:** Oracle programs, including any operating system, integrated software, any programs installed on the hardware, and/or documentation, delivered to U.S. Government end users are "commercial computer software" pursuant to the applicable Federal Acquisition Regulation and agency-specific supplemental regulations. As such, use, duplication, disclosure, modification, and adaptation of the programs, including any operating system, integrated software, any programs installed on the hardware, and/or documentation, shall be subject to license terms and license restrictions applicable to the programs. No other rights are granted to the U.S. Government.

This software or hardware is developed for general use in a variety of information management applications. It is not developed or intended for use in any inherently dangerous applications, including applications that may create a risk of personal injury. If you use this software or hardware in dangerous applications, then you shall be responsible to take all appropriate failsafe, backup, redundancy, and other measures to ensure its safe use. Oracle Corporation and its affiliates disclaim any liability for any damages caused by use of this software or hardware in dangerous applications.

This software and related documentation are provided under a license agreement containing restrictions on use and disclosure and are protected by intellectual property laws. Except as expressly permitted in your license agreement or allowed by law, you may not use, copy, reproduce, translate, broadcast, modify, license, transmit, distribute, exhibit, perform, publish or display any part, in any form, or by any means. Reverse engineering, disassembly, or decompilation of this software, unless required by law for interoperability, is prohibited.

The information contained herein is subject to change without notice and is not warranted to be error-free. If you find any errors, please report them to us in writing.

This software or hardware and documentation may provide access to or information on content, products and services from third parties. Oracle Corporation and its affiliates are not responsible for and expressly disclaim all warranties of any kind with respect to third-party content, products, and services. Oracle Corporation and its affiliates will not be responsible for any loss, costs, or damages incurred due to your access to or use of third-party content, products, or services.